

TREVIRA

Composition : 100% POLYESTER TREVIRA CS
 Weight : 340 g/m²
 Light fastness : Scale 6 (blue scale) Xenotest
 Abrasion resistance : 100.000 (rubs) Martindale
 Cleaning Washing :



Fire resistance:

C1	CRIB5	BS 7176 MH	M1	NF D 60013 (AM 18)	B1	EN 1021/1-2	IMO A 652 (16)
----	-------	------------	----	--------------------	----	-------------	----------------



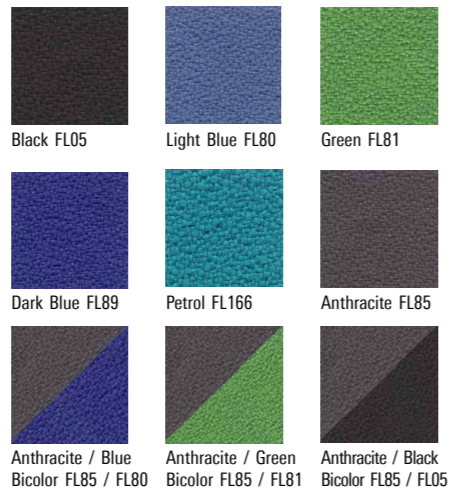
FLEX

Composition : 100% POLYESTER TREVIRA CS
 Weight : 300 g/m²
 Light fastness : Scale 6 (blue scale) Xenotest
 Abrasion resistance : 100.000 (rubs) Martindale
 Cleaning Washing :



Fire resistance:

C1	CRIB5	BS 7176 MH	M1	NF D 60013 (AM 18)	B1	EN 1021/1-2	IMO A 652 (16)
----	-------	------------	----	--------------------	----	-------------	----------------



TREVIRA BLEND

Composition : 100% POLYESTER TREVIRA CS
 Weight : 420 g/m²
 Light fastness : Scale 6 (blue scale xenotest)
 Abrasion resistance : 100.000 (rubs) Martindale
 Cleaning Washing :



Fire resistance:

C1	CRIB5	M1	B1	EN 1021/1-2	BS 7176 MH	NF D 60013 (AM18)	IMO A 652 (16)
----	-------	----	----	-------------	------------	-------------------	----------------



STAMSKIN

Composition : Stamskin TOP F 4340, backing Polyamide-jersey, coating antimicrobial and anti-fungal treatment
 Weight : 780 g/m²
 Light fastness : Scale 7
 Abrasion resistance : >120.000 rubs Martindale
 Advantages : Urine-, blood-, sweat-, fungal and waterproof, manufactured to environmentally friendly standards ISO 14001
 Cleaning : With brush, water and soap, rinse of with water, do not clean with stain-removers containing solvents or oily products
 N°528/2012/CE-Folpet : Stamskin Top contains the biocidal product Folpet, an antifungal additive used to help maintaining appearance, physical properties and prolong the service life of these articles

Flame retardant:

UK: BS 5852	D: DIN 53438/T2	F: NFP 92.507
-------------	-----------------	---------------



PUxx

Composition : PUxx no. 1, 100% Polyurethane, backing polyester cotton mixture, free from Phthalate and PVC.
 Weight : ± 520 g/m²
 Abrasion resistance : > 300.000 Martindale
 Light fastness : 6-7 (8 is excellent)
 Cleaning : PUxx no. 1 is easy to clean and disinfect. It is resistant to most cleaning agents and disinfectants (based on alcohol, chlorine and ammonia). Do not use solvents.
 Advantages : PUxx nr. 1 is free of Phthalate and PVC and OEKO-TEX certified. 100% waterproof. Urine and blood resistant. Extremely scratch resistant surface. Easily transport for heat (no sweat feeling).

Flame retardant:

GB BS 5852 Crib 5	EN 1021 1-2	CALL117-2013	IMO 2010 FTP: part 8	D DIN 4102 B1 (available on request only)
-------------------	-------------	--------------	----------------------	---



LEATHERETTE

Composition : Backing Cotton Jersey, coating fire retardant plasticised PVC
 Weight : 590 g/m²
 Light fastness : ISO105 >6
 Cleaning : Clean material with humid cloth and householdsoap. Do not use cleaning-materials that contain solvents.

Flame retardant :

FMVSS 302 (= 95/28/EG IV, R118)	b, EN1021 1+2
---------------------------------	---------------



ESD DRALON

Composition : Dralon-Bekinox
 Weight : 560 g/m²
 Colour fastness : Scale 5-8
 Abrasion resistance : 50.000 rubs Martindale
 Cleaning : With a damp cloth, do not use bleach



ESD LEATHERETTE

Composition : PVC Compound/CO/RES
 Weight : 630 g/m², ± 50 g/m² knitted fabric
 Colour fastness : Scale 6-8
 Cleaning : With a damp cloth, do not use bleach



INDUSTRY OFFICE MEDICAL DENTAL
UPHOLSTERY

Stamskin



K189
Capri Blue



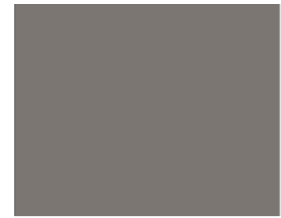
K05
Black



K85
Anthracite



K89
Dark Blue



K295
Mouse Grey



K170
Burgundy Red



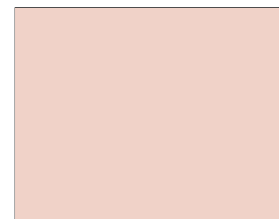
K190
Ochre Yellow



K292
Forest Green



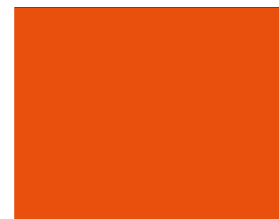
K258
Taupe



K294
Blush



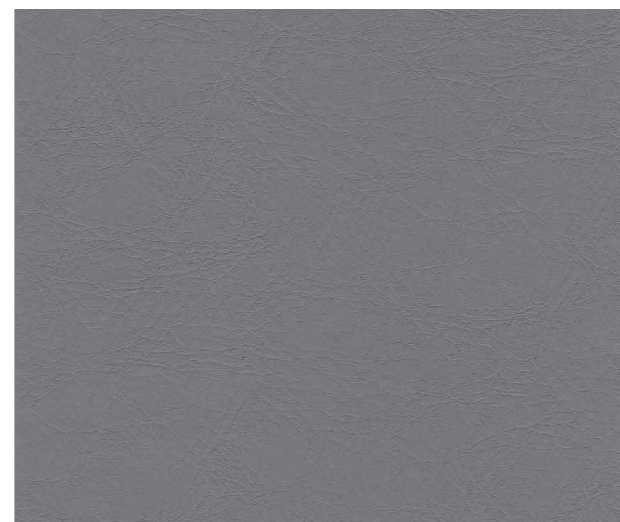
K394
Pink Orchid



K196
Dutch Orange

All Stamskin colours can be combined with each other to form bicolor colors

PUxx



PU95
Grey



PU89
Dark Blue



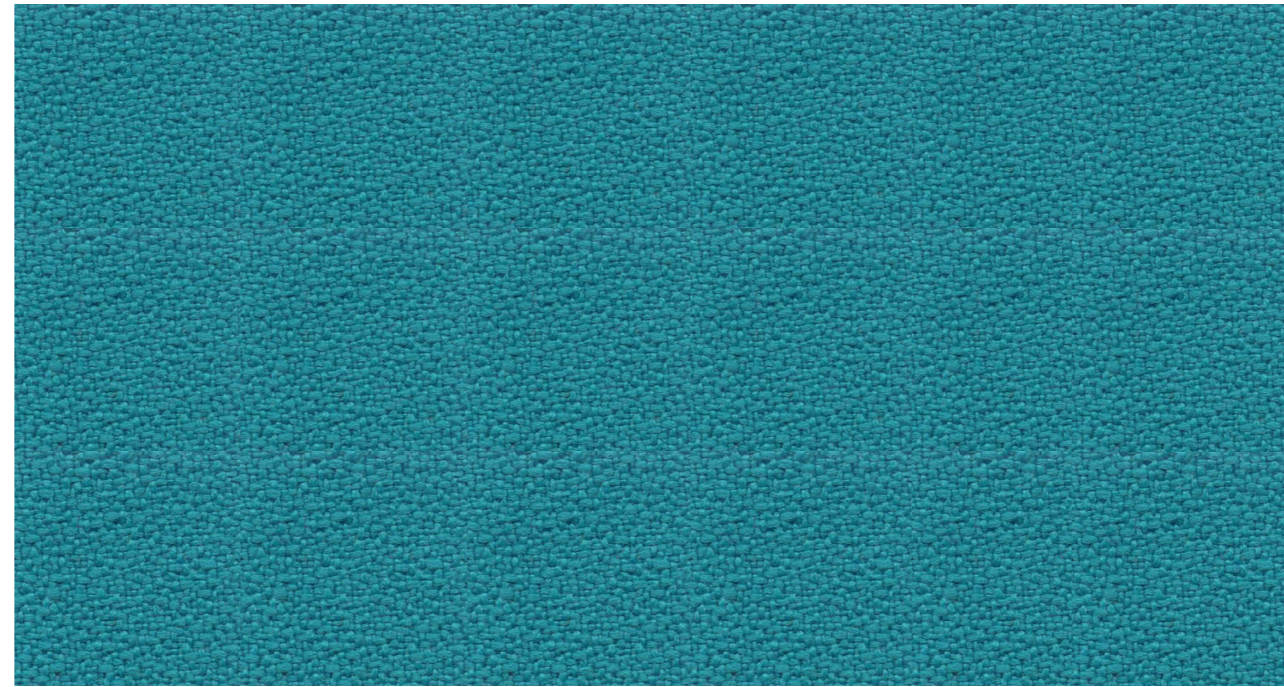
PU05
Black

Leatherette



K11
Black

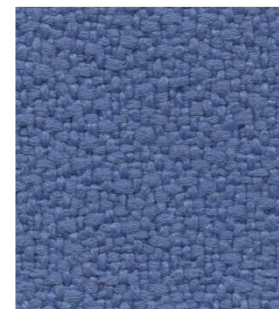
Flex



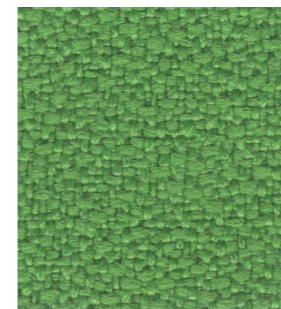
FL166
Petrol



FL05
Black



FL80
Light Blue



FL81
Green



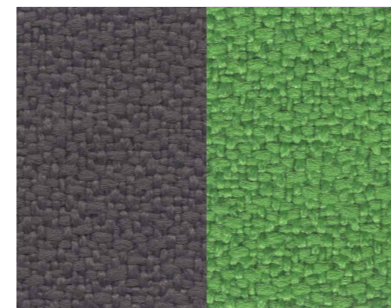
FL85
Anthracite



FL89
Dark Blue



FL85/FL80
Bicolor Anthracite/Blue

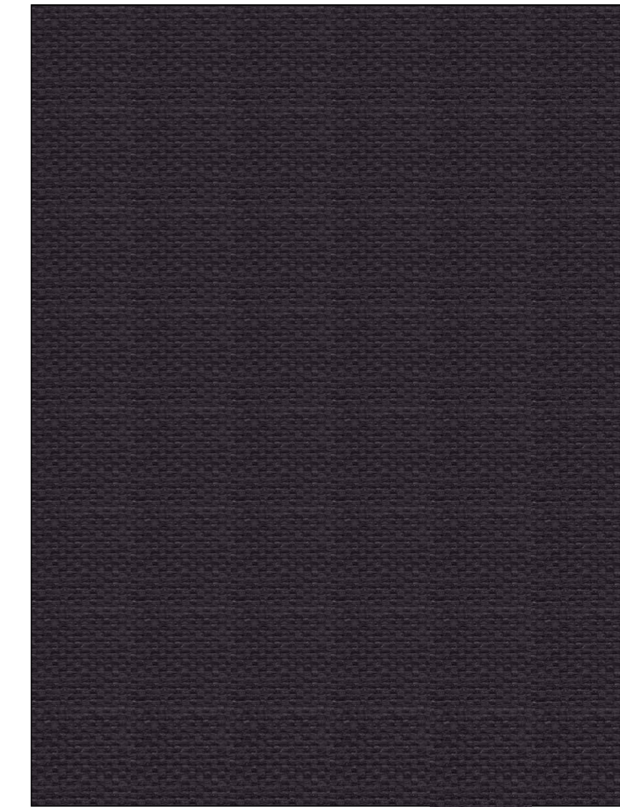


FL85/FL81
Bicolor Anthracite/Green



FL85/FL05
Bicolor Anthracite/Black

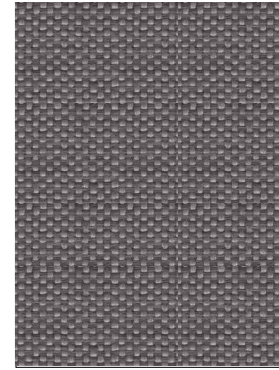
Blend



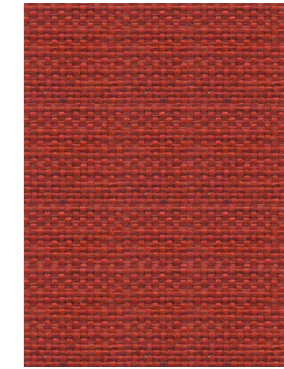
BL05
Black



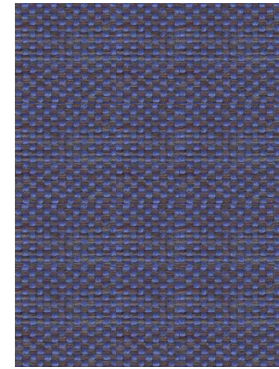
BL77
White



BL95
Grey

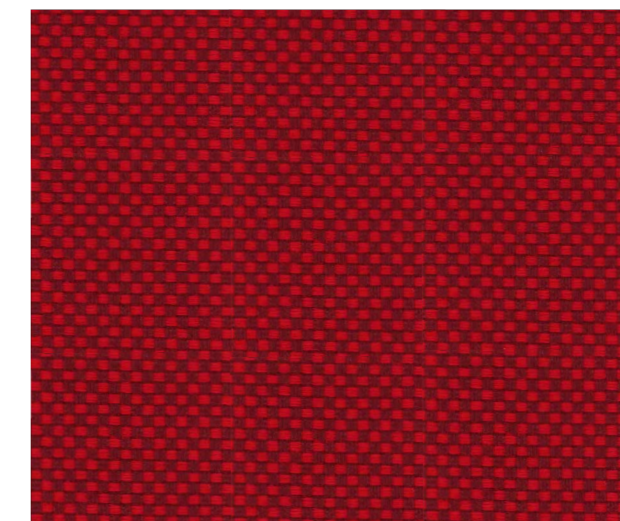


BL87
Red



BL89
Blue

Trevira



D17
Red



D05
Anthracite



D87
Blue



D04
Grey

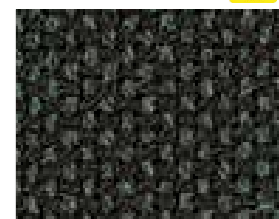


D81
Blue Black

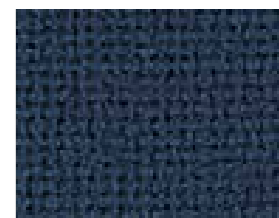


D09
Black

ESD



D07 ESD
Anthracite Dralon



D89 ESD
Dark Blue Dralon



K07 ESD
Black Leatherette